

The Holiday Season

Deciding which Christmas tree to take home might be one of the more straightforward decisions you make this festive season. But with changing routines, colder weather, and holiday pressures, other decisions can feel much more challenging.

We've brought together some insights and guides to help you find the path to the right decisions. This month, we have the BLHR team's advice on managing staff holidays, guidance on the legal limits of festive celebrations, practical options for handling property during a divorce, and what you need to know about tax and gifting this Christmas.

We are also excited to share that we have moved our Chelmsford office to the second floor of Hyatt Place on Broomfield Road. We look forward to welcoming you to our new environment.



The festive season brings unique challenges for employers managing staff holidays. Whether your business faces a busy period or a seasonal slowdown, balancing operational needs and employee satisfaction is key. This article offers practical tips to plan effectively, stay compliant, and keep your team happy.

[Find out more here.](#)

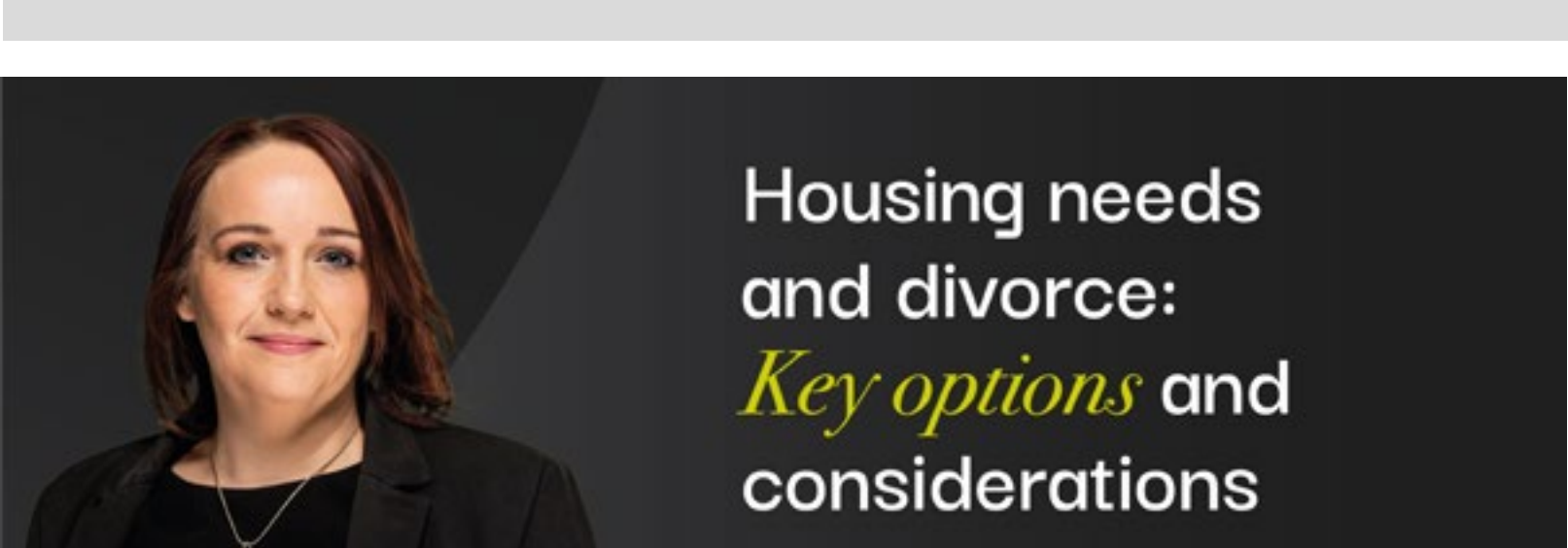
by Sarah Shah



Christmas is a time for present giving, but it's important to understand the tax implications of cash gifts. Our article explains the rules around Inheritance Tax, allowances for gifting, and how to avoid future tax liabilities. Make sure your festive generosity doesn't come with unexpected costs.

[Find out more here.](#)

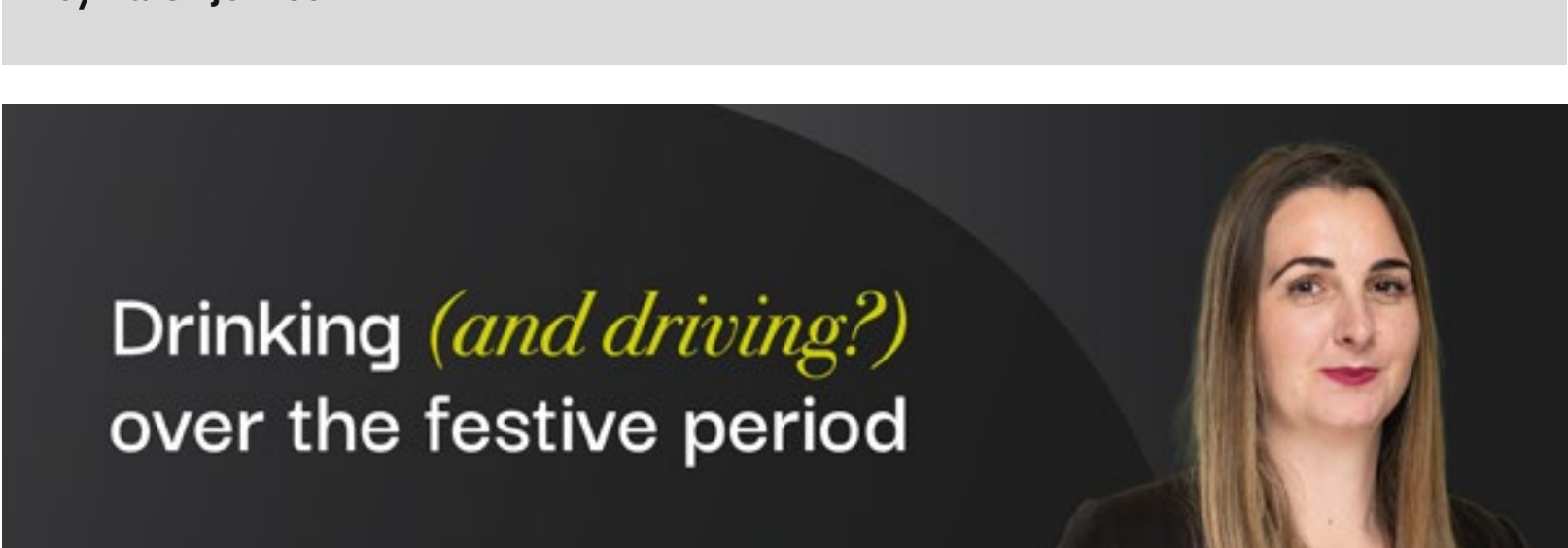
by Leah Woodlee



When couples divorce, one of the most pressing concerns is what happens to the family home. Whether it's an emotional attachment or a significant financial asset, the decision can be complex. This article explores key options for housing arrangements, from selling the property to dividing assets, and factors influencing these choices.

[Find out more here.](#)

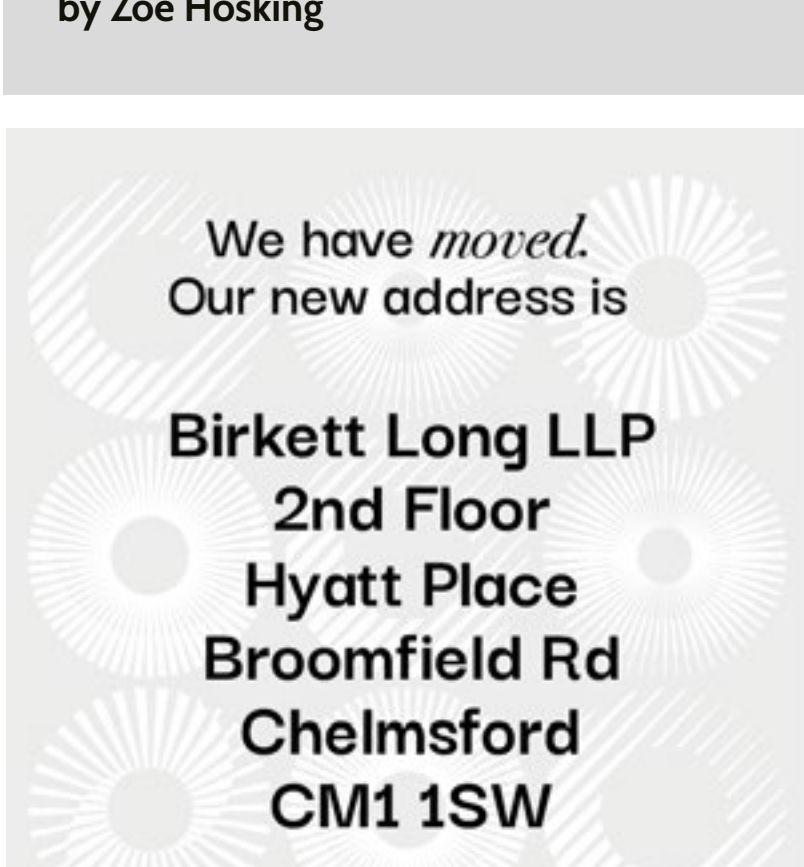
by Karen Johnson



With Christmas parties in full swing, drink-driving campaigns are ramping up. Learn about UK limits, penalties, and how spiked drinks can impact legal outcomes. Discover why it's safest to avoid alcohol entirely if driving and how Birkett Long can help if you need advice.

[Find out more here.](#)

by Zoe Hosking



- Tax burden on Agricultural Estate Planning
- The Autumn Budget's Impact on Inheritance Disputes
- Opportunities for Small Business & Energy Efficient Grants
- Business Rates and How the Reform Could Impact You

